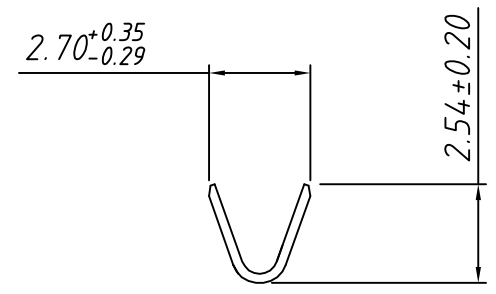
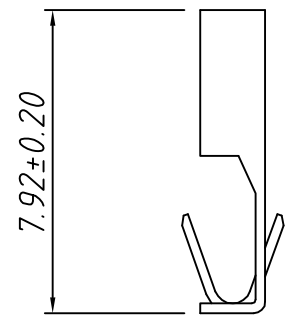
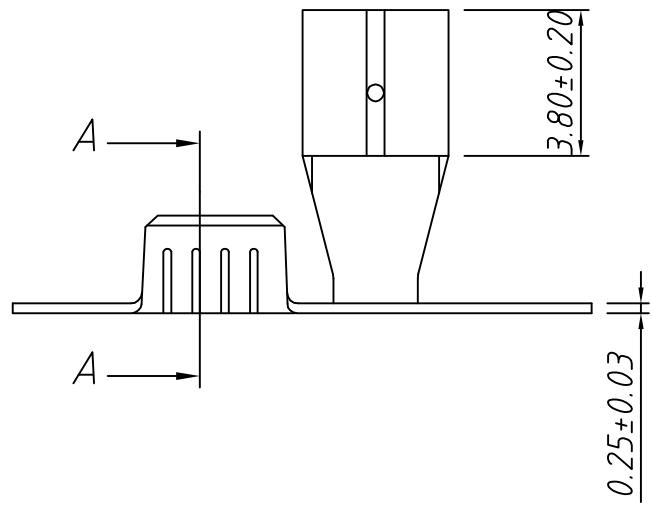
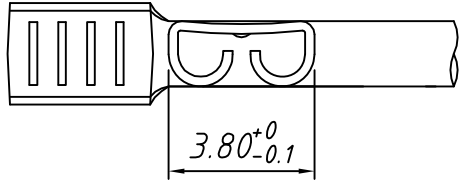



1
RoHS Compliant

Note:
 1. Appearance: Terminal cannot be corrected, scratched or oxidized
 2. Material:
 Brass T=0.25mm, Tin plating
 3. Q'TY: 10000PCS/REEL
 4. Connectoin Table: W2.8×T0.5mm
 5. Wire Range: 16~22AWG



SECTION A-A

TOLERANCE		PROJECTION	Description:
0 - 3mm	±0.10	UNITS	mm
3 - 6mm	±0.15	SHEET SIZE	A4
6 - 10mm	±0.20	KLS P/N: KLS8-AFL07-1100500	
10 - 30mm	±0.25	KLS P/N: KLS8-AFL07-1100500	
Draw: Daniel	ANGLE ±3°	 NingBo KLS ELECTRONIC CO.,L TD.	
Check: Daniel	Data: 2019-04-10		