

PAD AREA
 KEEP OUT AREA
 RECOMMENDED PCB LAYOUT
 COMPONENT SIDE (TOLERANCE ±0.05)

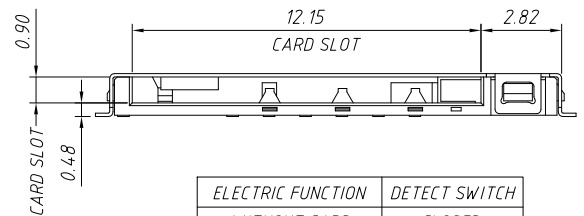
Technical Characteristics

1.General Characteristics
 Dimensions: 15.75L×17.17W×1.50H mm
 Weight: Approx 0.4±0.1g
 Durability: 1500 cycles min.

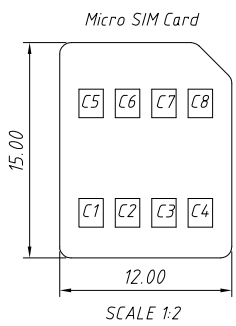
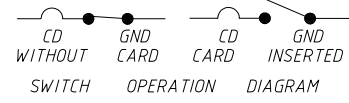
2.Electrical Characteristics
 Contact resistance: 150mΩ typical, 500mΩ max
 Insulation resistance: >1000Ω/500V DC

3.Solderability
 Vapor phase: 215°C, 30sec. Max
 IR reflow: 250°C, 5sec. Max
 Manual soldering: 370°C, 3sec. Max

4.Environmental Characteristics
 Operating temperature: -40°C- +85°C
 Operating humidity: 10%- +95%RH



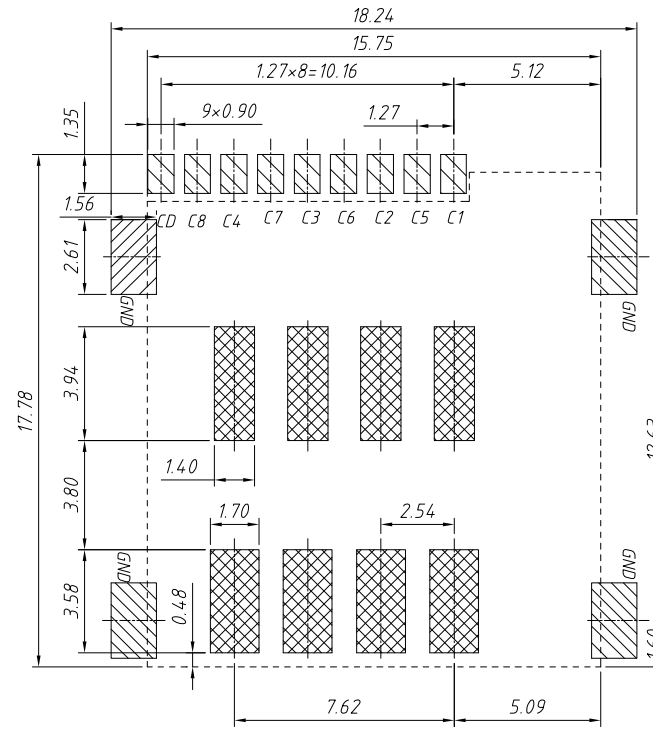
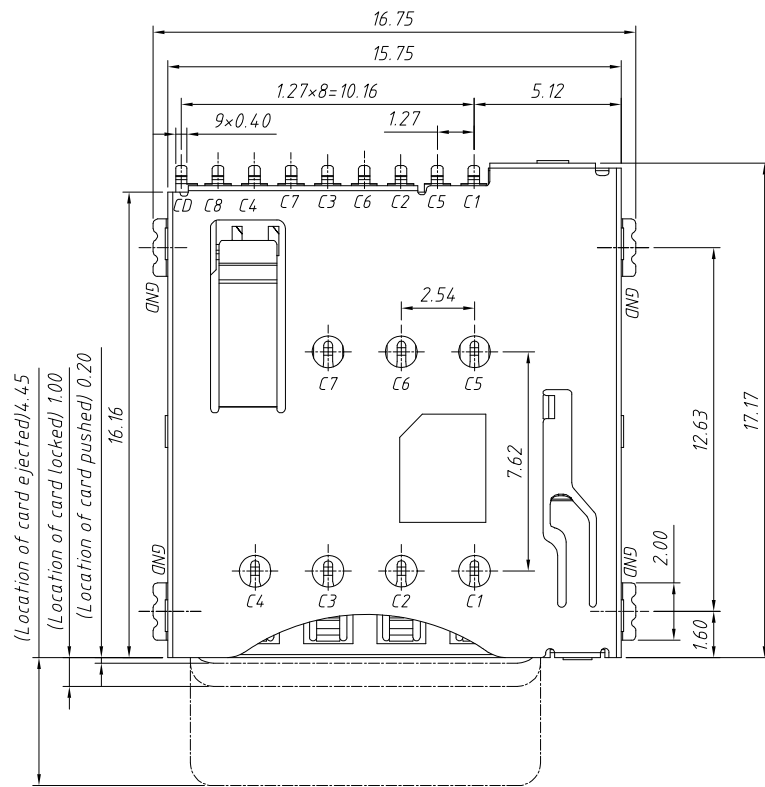
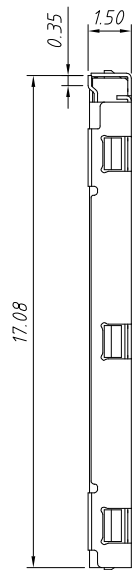
| ELECTRIC FUNCTION | DETECT SWITCH |
|-------------------|---------------|
| WITHOUT CARD | CLOSED |
| CARD INSERTED | OPEN |



| Pin No. | NAME |
|---------|----------|
| C1 | VCC |
| C2 | RST |
| C3 | CLK |
| C4 | Reserved |
| C5 | GND |
| C6 | VPP |
| C7 | I/O |
| C8 | Reserved |

Material:
 Housing: Hi-temp Thermoplastic, UL 94 V-0, Black
 Data Contact: Copper Alloy, Gold plated
 CD Switch: Copper Alloy, Gold plated
 Shell: Stainless Steel, Gold plated
 Coil Spring: SWP
 Heart CAM: Hi-temp Thermoplastic, UL 94 V-0, Black
 CAM PIN: Stainless Steel

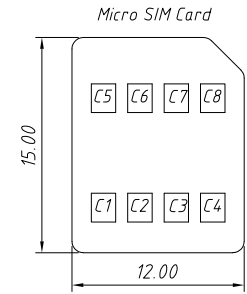
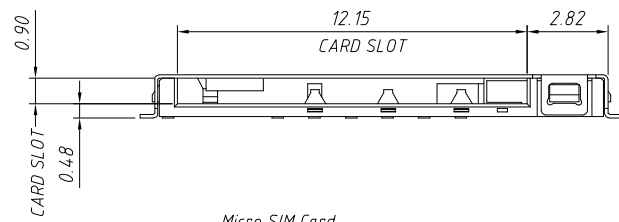
| GENERAL TOLERANCE | | ANGLE TOLERANCE | | PROJECTION | | Description: | |
|-------------------|-------|-----------------|------------|----------------------------------|----|---|--|
| .X | ±0.15 | .X | ±5° | UNITS | mm | Micro SIM CONN; PUSH/PUSH, 6Pin, H1.5mm, with CD Pin L-KLS1-SIM-090-(6+1)P-H1.5-R | |
| .X | ±0.03 | .X | ±3° | SHEET SIZE | A4 | | |
| .XX | ±0.05 | .XX | ±2° | KLS P/N: | | | |
| Draw by: | Jenny | Date: | 2018-03-10 | NingBo KLS ELECTRONIC CO., L TD. | | | |
| Check by: | | Date: | 2018-03-10 | | | | |
| SCALE | | SHEET | 1 OF 1 | | | | |



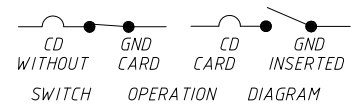
Electrical
 Current Rating: 0.5A
 Voltage Rating: 5.0 vrms
 Contact resistance: 100mΩ Max.
 Insulation resistance: 1000M Min.
 Withstanding Voltage: 250V ACrms For 1 Minute.
 Operating Temp Range: -40°C - +85°C
 Mating Cycles: 1500 Insertions

Material:
 Insulator: Hi-Temperature plastic, UL 94 V-0, Black
 Terminal: Copper Alloy, Gold Flash Plating On All Terminal, And 50u" min nickel underplated on allover.
 Shell: Stainless Steel, 50u" Nickel underplated on allover, gold flash on solder pad.

PAD AREA
 KEEP OUT AREA
 RECOMMENDED PCB LAYOUT
 COMPONENT SIDE (TOLERANCE ±0.05)



| ELECTRIC FUNCTION | DETECT SWITCH |
|-------------------|---------------|
| WITHOUT CARD | CLOSED |
| CARD INSERTED | OPEN |



| Micro SIM Card | |
|----------------|----------|
| Pin No. | NAME |
| C1 | VCC |
| C2 | RST |
| C3 | CLK |
| C4 | Reserved |
| C5 | GND |
| C6 | VPP |
| C7 | I / O |
| C8 | Reserved |

| GENERAL TOLERANCE | | ANGLE TOLERANCE | | PROJECTION | | Description: | |
|-------------------|-------|-----------------|------------|----------------------------------|----|---|--|
| .X | ±0.15 | .X | ±5° | UNITS | mm | Micro SIM CONN; PUSH/PUSH, 8Pin, H1.5mm, with CD Pin L-KLS1-SIM-090-(8+1)P-H1.5-R | |
| .X | ±0.03 | .X | ±3° | SHEET SIZE | A4 | | |
| .XX | ±0.05 | .XX | ±2° | KLS P/N: | | | |
| Draw by: | Jenny | Date: | 2018-03-10 | NingBo KLS ELECTRONIC CO., L TD. | | | |
| Check by: | | Date: | 2018-03-10 | | | | |
| SCALE | | SHEET | 1 | OF | 1 | | |