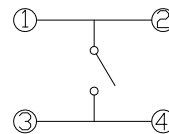
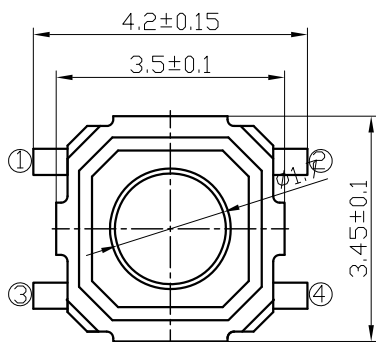
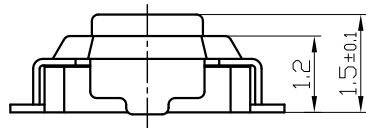
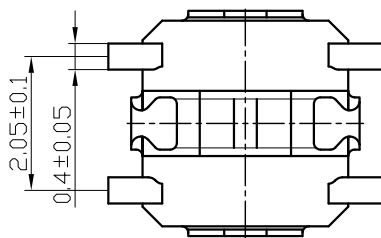


Tactile Switches

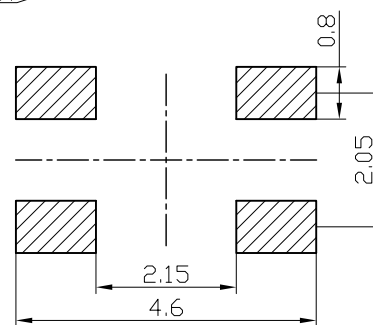
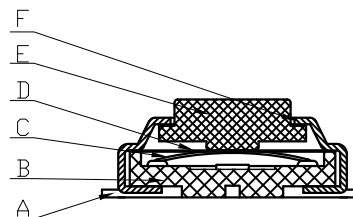
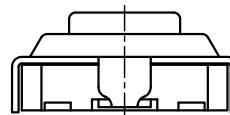
L-KLS7-TS3303A-1.5-250-B

Specifications:

1. Rated Current: 50mA, 12V DC
2. Insulation resistance: 100MΩ Min. 100V DC
After 260° high temperature, decay value within
3. Contact resistance: 200mΩ Max. 100V DC
3. Dielectric strength: 250V AC for 1min
20% of the initial value



Circuit Diagram



P.C.B LAYOUT

ORDER INFORMATION

KLS7-TS3303A-1.5-250-B

Part Number

Series No.

Color: B=Black, L=blue

Height: 1.5mm