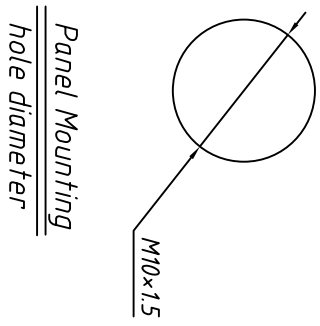
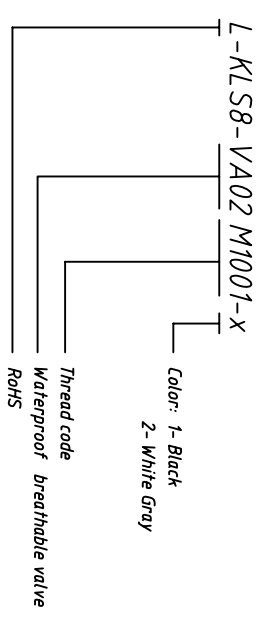



**Material**  
 Material: PC  
 Film: EPTFE  
 Sealing: NBR, EPDM  
 IP rating: IP67  
 Thread: M10x1.5  
 Panel Mounting: M10x1.5  
 Temp. Range: -40 ° C ~ + 125 ° C  
 breathable valve Range: 900ml/minute  
 Maximum torque: 10Kgf.cm Max.

*Order Information*



GENERAL TOLERANCE		ANGLE TOLERANCE		Description:	
X. ±0.60	X. ±5°	M10x1.5 waterproof breathable valve			
X ±0.38	.X ±3°				
XX ±0.25	.XX ±2°	PROJECTION		KLS P/N:	KLS8-VA02M1001-X
Draw	2018-01-20	UNITS	mm	 Ningbo KLS ELECTRONIC CO., LTD.	
Check	2018-01-20	SHEET SIZE	A4		
SCALE					