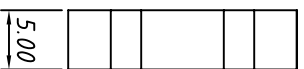
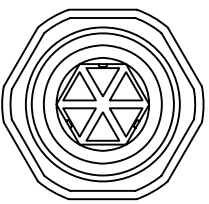
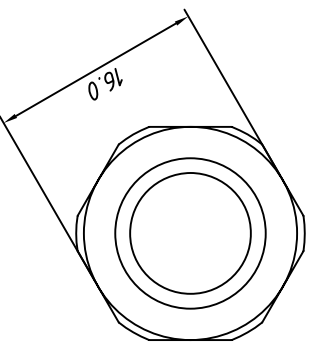


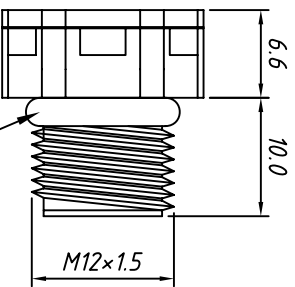
Nut



5.00



body

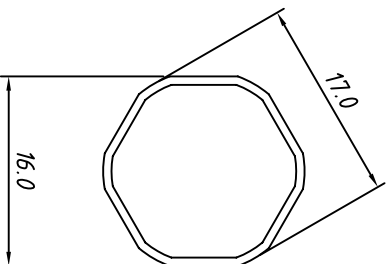


6.6

10.0

M12×1.5

sealing

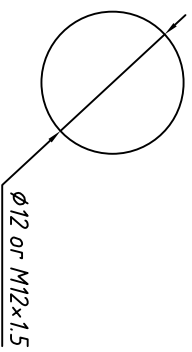
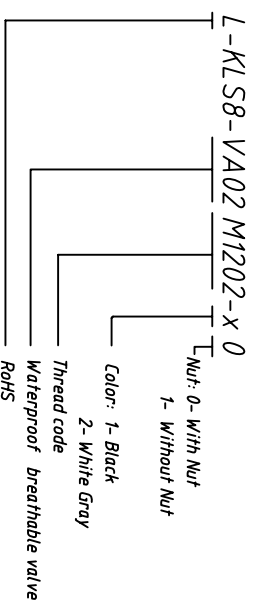


11.0

16.0

Material
 Nut and Body Material: PC
 Film: EPTFE
 Sealing: NBR, EPDM
 IP rating: IP67
 Thread: M12×1.5
 Panel Mounting: $\phi 12$ or M12×1.5
 Temp. Range: -40°C ~ $+110^{\circ}\text{C}$
 breathable valve Range: 3500ml/minute Max.
 Maximum torque: 8kgf.cm Max.

Order Information



$\phi 12$ or M12×1.5

Panel Mounting
 hole diameter

GENERAL TOLERANCE		ANGLE TOLERANCE		PROJECTION		SCALE	
X. ± 0.60	X. $\pm 5^{\circ}$.XX $\pm 2^{\circ}$	ϕ	2018-01-20	44	 Ningbo KLS ELECTRONIC CO.,LTD.	
X ± 0.38	.X $\pm 3^{\circ}$.X	mm	2018-01-20			
XX ± 0.25							

Description: M12×1.5 waterproof breathable valve

KLS P/N: KLS8-VA02M1202-x0

Ningbo KLS ELECTRONIC CO.,LTD.