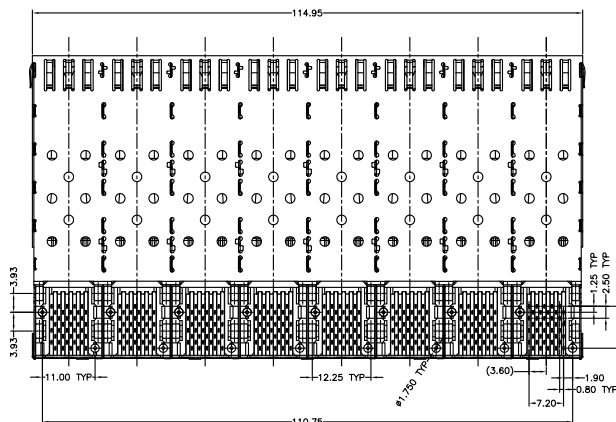
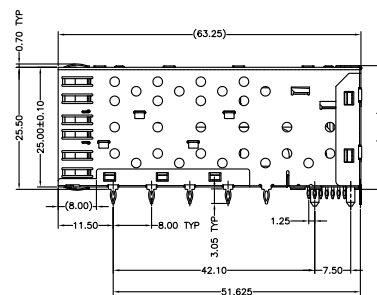
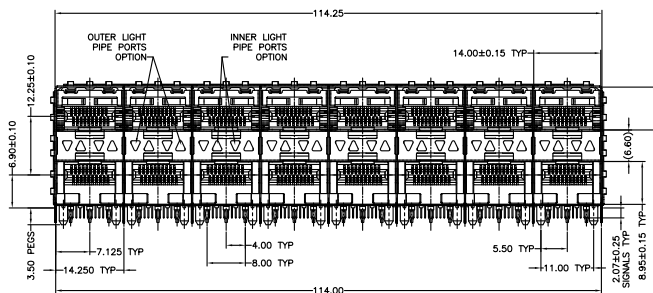
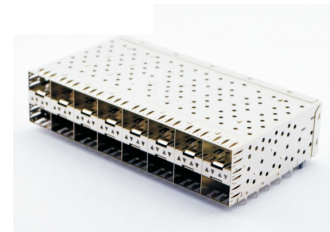


## SFP\*XFP\*QSFP/QSFP+ Connectors

### KLS12-SFP-021

#### Electrical Specifications:

VOLTAGE: 30 VOLTS AC.  
CURRENT: 0.50 A PER CONTACT.  
CONTACT RESISTANCE:50 MILLIOHMS MAX;  
INSULATION RESISTANCE:1000 MEGAOHMS MIN  
AT 100 VDC FOR 1 MINUTE.  
DIELECTRIC WITHSTANDING VOLTAGE:300 VDC MIN;  
TEMPERATURE:  
OPERATION: -40°C~+85°C  
STORAGE: -55°C~+105°C  
LIGHTPIPE PAD LAYOUT IS FOR LOW-PROFILE LED PACKAGE.  
LED SIZE(LxWxH): 2x1x0.4MM MAX.  
RoHS COMPLIANCE.



**MECHANICAL:**  
CAGES: NICKEL SILVER ALLOY, THICKNESS 0.25MM.  
CONNECTOR HOUSING: GLASS FILLED PLASTIC, 94 V-0, COLOR: BLACK.  
OVERMOLDED TERMINAL HOUSING: GLASS FILLED PLASTIC, 94 V-0, COLOR: BLACK.  
LIGHTPIPES: POLYCARBONITE, 94 V-0, COLOR: CLEAR.  
LIGHTPIPE HOLDER: GLASS FILLED PLASTIC, 94 V-0, COLOR: BLACK.  
CLIP: STAINLESS STEEL.  
EMI SPRING: COPPER ALLOY.  
TERMINAL: POSPHRR BRONZE.  
GOLD PLATING FOR CONTACT AREA, THICKNESS SEE OPTION.  
TIN PLATING FOR PRESS FIT AREA.  
NICKEL PLATING AS UNDERLAYER FOR WHOLE TERMINAL.

## ORDER INFORMATION

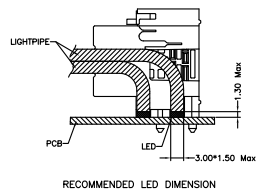
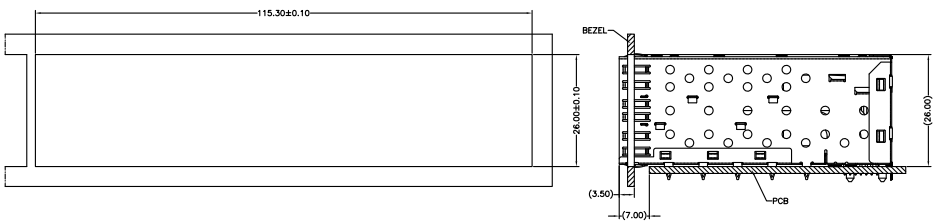
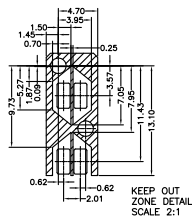
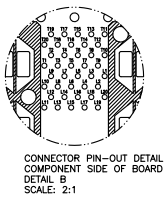
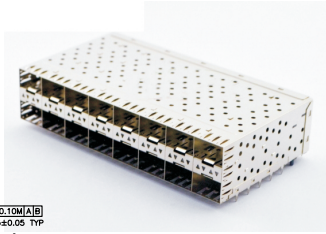
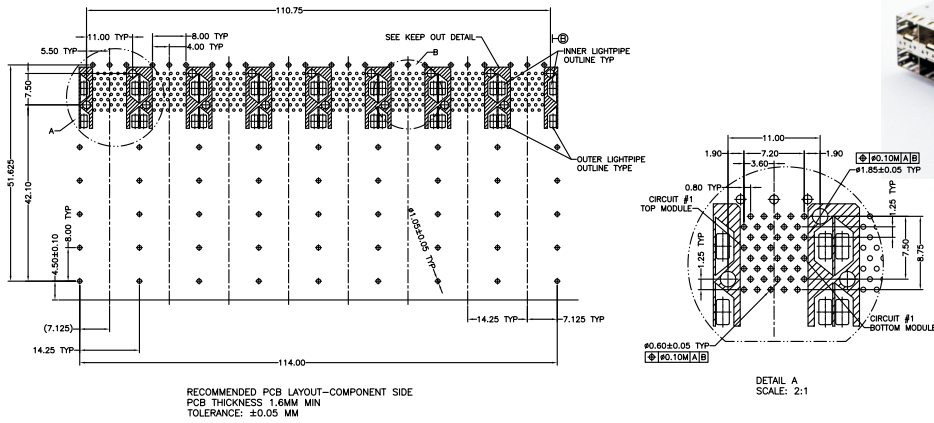
KLS12-SFP-021

Part Number

## SFP\*XFP\*QSFP/QSFP+ Connectors

KLS12-SFP-021

XII



## ORDER INFORMATION

KLS12-SFP-021

Part Number