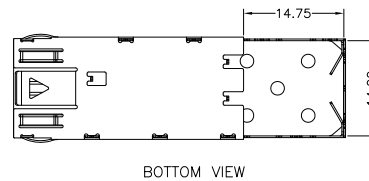
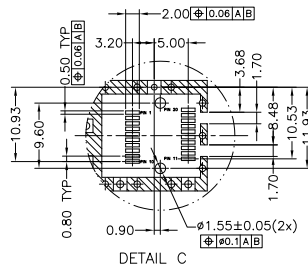
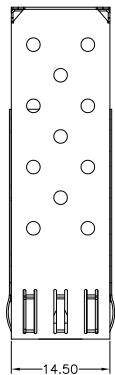
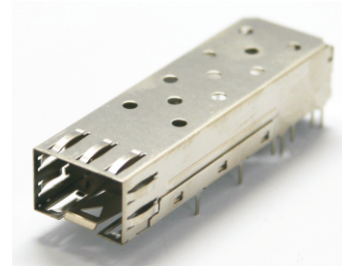


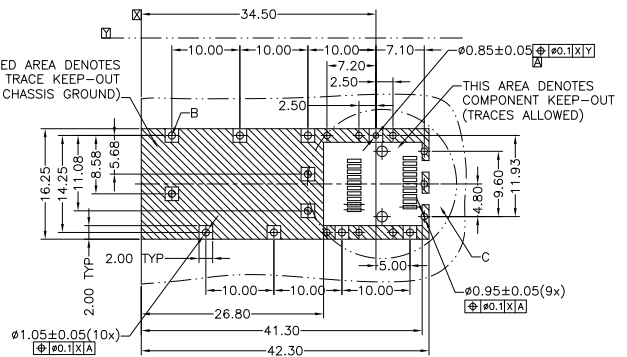
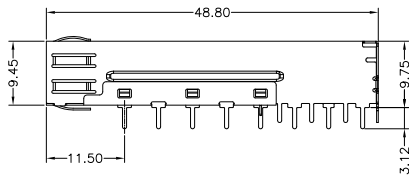
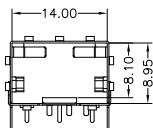
## SFP\*XFP\*QSFP/QSFP+ Connectors

### KLS1-SFP-017

MECHANICAL:  
 CAGES: C7701H, THICKNESS 0.25MM.  
 PLATING: NO NEED.  
 THIS CAGE IS FOR SINGLE SIDE USE ONLY.  
 TEMPERATURE:  
 OPERATION: -40°C~+85°C  
 STORAGE: -40°C~+85°C  
 RoHS COMPLIANCE.  
 DIMENSIONS WITH "QC" MARK HAVE TO BE MEASURED IN IPQC INSPECTION.  
 TLA APPEARANCE QUALITY AND OTHERS ACCORDING TO QAIP-008 IF NOTHING ELSE IS SPECIFIED.



BOTTOM VIEW



RECOMMENDED PCB LAYOUT—COMPONENT SIDE  
 PCB THICKNESS 1.6MM MIN  
 TOLERANCE: ±0.05 MM

## ORDER INFORMATION

KLS1-SFP-017

Part Number