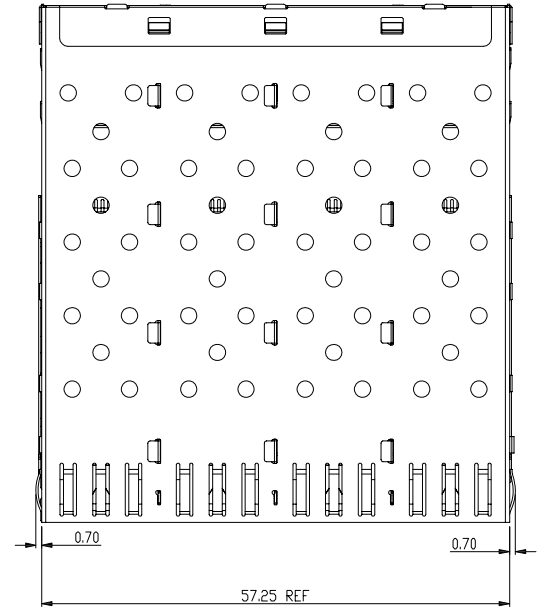
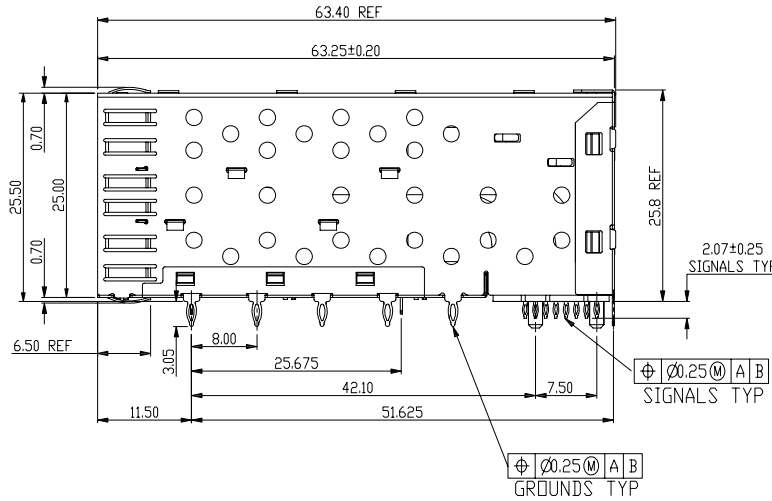
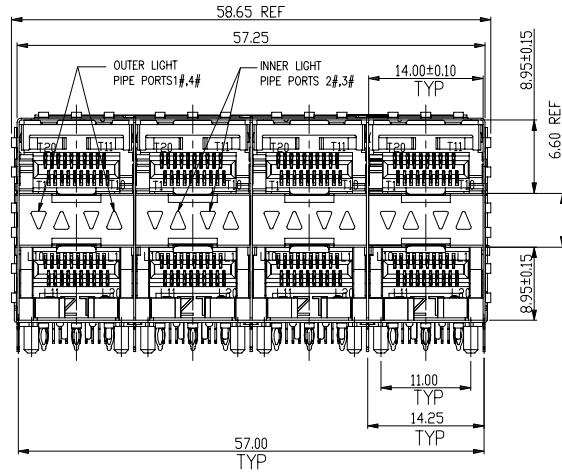


RoHS Compliant



NOTE:

MECHANICAL:

- CONTACT: PHOSPHOR BRONZE.
- CONNECTOR HOUSING: LCP UL 94V-0. COLOR: BLACK.
- MOULDED INSET: PA46 UL 94V-0. COLOR:BLACK.
- CAGE: COPPER ALLOY.
- LIGHT PIPES: POLYCARBONATE. UL 94V-0. COLOR:CLEAR
- LIGHT PIPE HOUSING: PBT UL 94V-0 COLOR:BLACK.

PLATED:

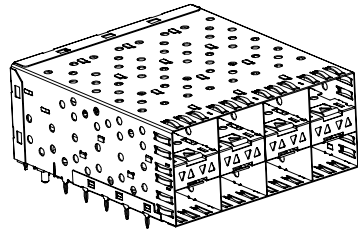
- CONTACT MATING AREA : PLATING GOLD OVER 1.27 MICROMETERS MINIMUM NICKEL.
- CONTACT NEEDLE EYE: 2.54 MICROMETERS MINIMUM MATTE TIN OVER 1.27 MICROMETERS MINIMUM NICKEL.

MECHANICAL REQUIREMENT:

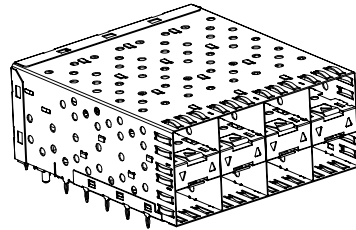
- DURABILITY: 100 CYCLES MIN.
- INSERTION AND EXTRACTION FORCE: 40N MAX & 11.5N MAX.

ENVIRONMENTAL:

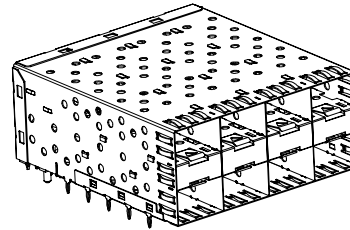
- LOW LEVEL CONTACT RESISTANCE(LLCR):
ΔR 10 MILLIOHMS MAXIMUM FOR SHIELD AND SIGNAL CONTACTS.
- WITHSTANDING VOLTAGE: 300V AC/MAX.
- INSULATION RESISTANCE: 1x10⁹ OHMS MINIMUM.
- RATINGS CURRENT: SIGNAL APPLICATION ONLY.
- RATINGS VOLTAGE: 120 volts AC.
- OPERATION: -40°C~+85°C.
- STORAGE: -55°C~+105°C.



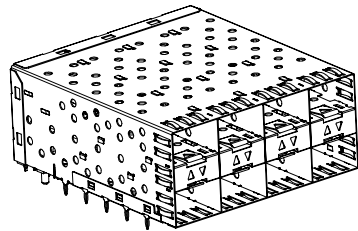
SFP-024L-4
WITH INNER/OUTER
LIGHT PIPES



SFP-024L-2A
WITH OUTER LIGHT PIPES



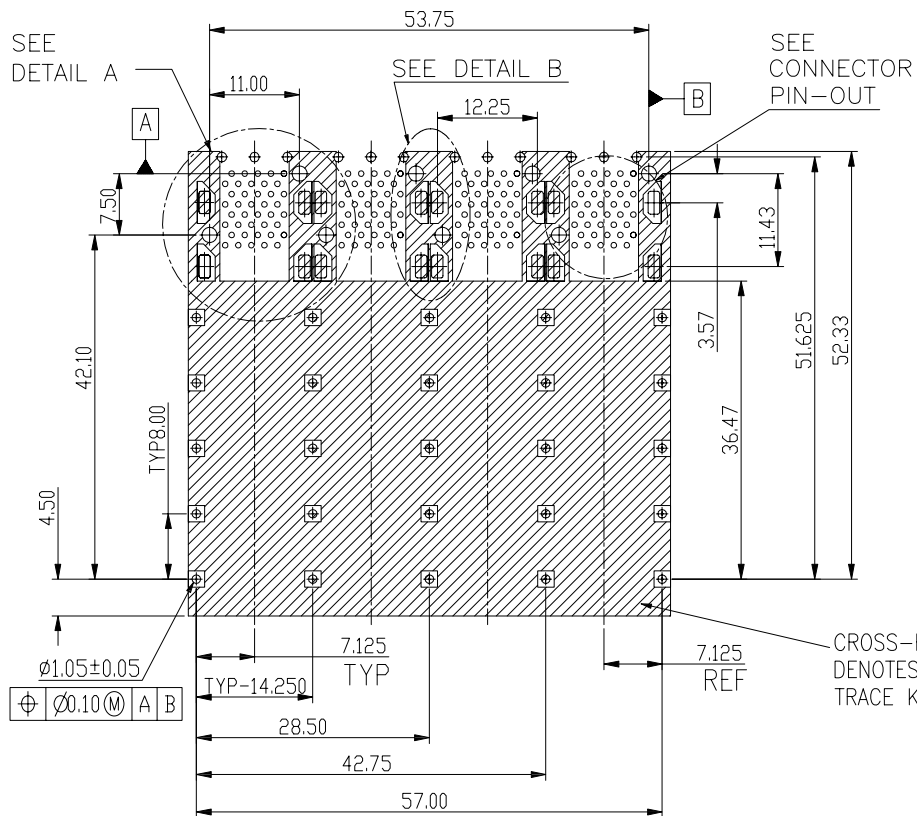
SFP-024
WITHOUT LIGHT PIPES



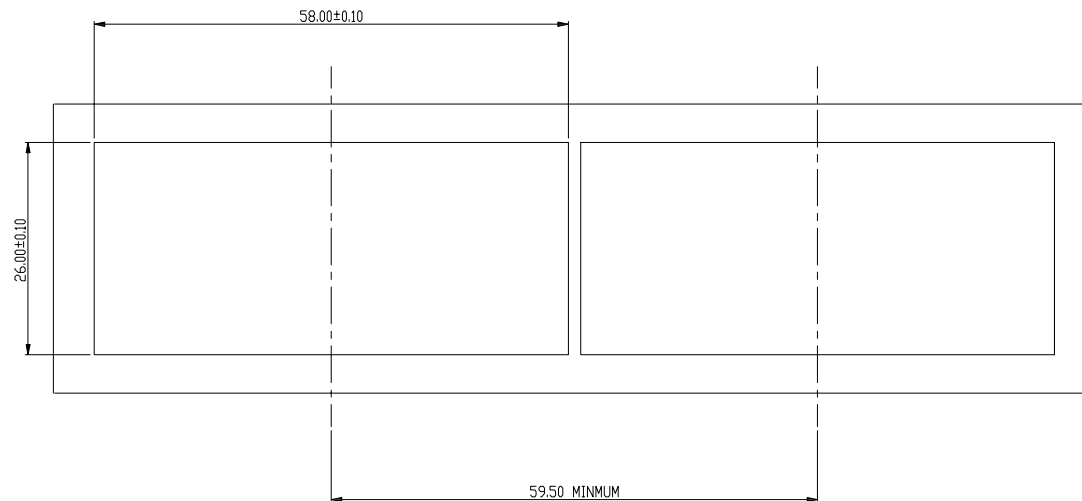
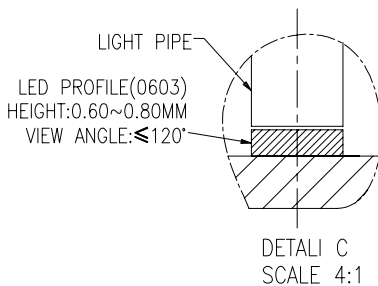
SFP-024L-2B
WITH INNER LIGHT PIPES

GENERAL TOLERANCE		ANGLE TOLERANCE		PROJECTION		Description:	
X.	±0.60	X.	±5°	UNITS	mm	SFP 2x4 Press Fit Connector	
.X	±0.38	.X	±3°	SHEET SIZE	A4		
.XX	±0.25	.XX	±2°			P/N:	KLS12-SFP-024
Draw by: Date		2016-07-01		KLS ELECTRONIC CO., LTD.			
Check by: Date		2016-07-01					
SCALE		SHEET	OF				

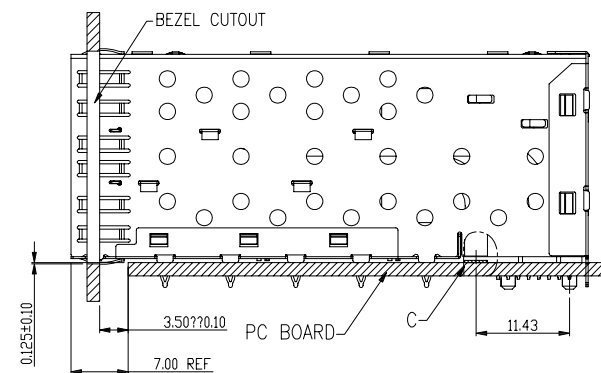
RoHS Compliant



RECOMMENDED PC BOARD LAYOUT
AS VIEWED FROM COMPONENT SIDE
TOLERANCE $\pm 0.05\text{mm}$

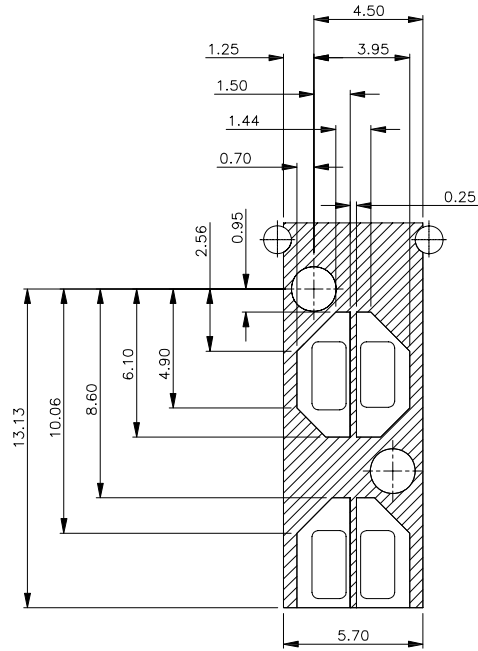


BEZEL CUT-OUT CENTER SPACING DETAIL
BEZEL THICKNESS: 0.8-2.6

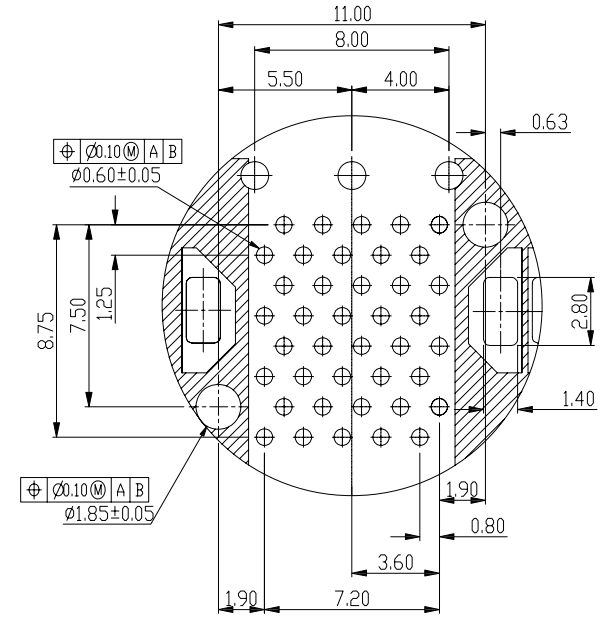
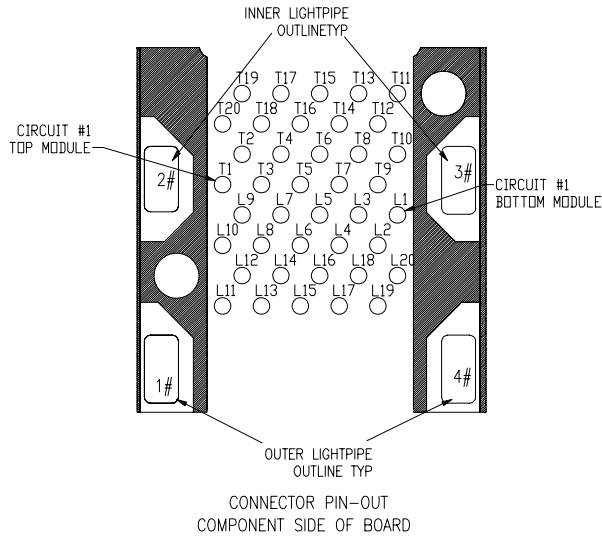


GENERAL TOLERANCE		ANGLE TOLERANCE		PROJECTION		Description:	
X.	± 0.60	X.	$\pm 5^\circ$	UNITS	mm	SFP 2x4 Press Fit Connector	
.X	± 0.38	.X	$\pm 3^\circ$	SHEET SIZE	A4		
.XX	± 0.25	.XX	$\pm 2^\circ$				
Draw by: Date		2016-07-01		KLS ELECTRONIC CO., LTD.		P/N:	KLS12-SFP-024
Check by: Date		2016-07-01					
SCALE		SHEET	OF				

RoHS Compliant



DETAIL B
SCALE 6:1



DETAIL A
SCALE 6:1

GENERAL TOLERANCE	ANGLE TOLERANCE	PROJECTION	Description:
.X ±0.60	.X ±5°	UNITS	
.X ±0.38	.X ±3°	SHEET SIZE	
.XX ±0.25	.XX ±2°		SFP 2x4 Press Fit Connector
Draw by: Date		P/N: KLS12-SFP-024	
2016-07-01			
Check by: Date			
2016-07-01			
SCALE	SHEET	OF	

KLS ELECTRONIC CO., LTD.