

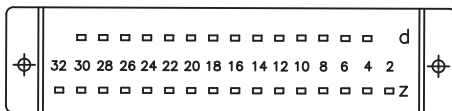
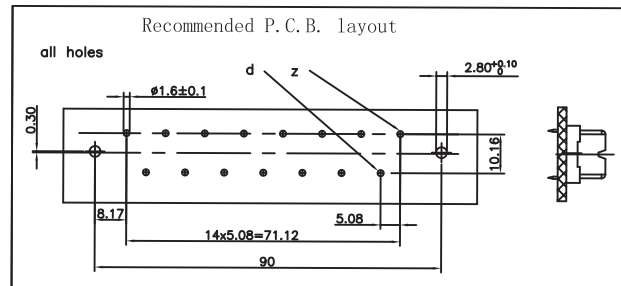
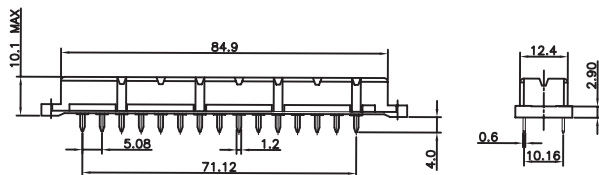
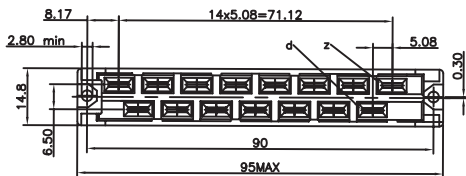
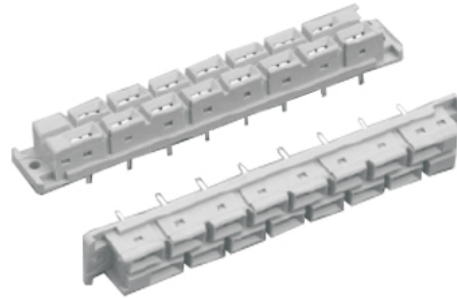
## DIN41612 Connectors

KLS1-125-3-159-12-30 Vertical Female Type H15 Connectors



### Parameter

Housing: PBT & 30% Glass Fiber (UL94V-0)  
 Contact: Female: Phosphor Bronze  
 Plating: Ag/Ni plated  
 Operating temperature: -55°C ~ +105°C  
 Contact resistance: 8m(ohm) max.  
 Insulator resistance: 10<sup>9</sup>M(ohm) min.  
 Current rating: 15 AMP  
 Withstanding voltage: AC 3100V for 1 minute  
 Insertion force: 90N max  
 Withdrawal force: 0.2N/pin min



## ORDER INFORMATION

Product NO.: KLS1-125-3-159-12-30

Pos. NO. —┐