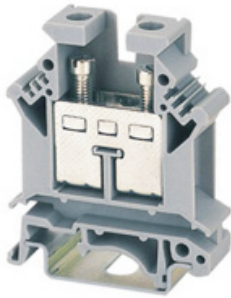


# UK Rail-Mounted Terminal Block



UK16N



Standard	UL	IEC
Voltage	600V	800V
Current	85A	76A
Wire Size	12-4AWG	0.2-16mm <sup>2</sup>
T/W/End plate	12.2/42.5/1.5mm	
Height(NS35 : 7.5 / NS35 : 15 / NS32)	54/61.5/59mm	
Rated Surge Voltage/Contamination Class	8kV/3	
Stripping Length	11 mm	
Screw Thread/Tightening Torque	M4/1.2Nm	
Internal Cylindrical Gage	B7	
Insulating Material/Inflammability Class	PA/V-0	
Specification	Model	
(1)Terminal Block	UK 16	
(2)End Cover	D-UK16	
(3)Fixed Bridge	2-P	
	3-P	
	5-P	
	10-P	FBI 10-12
(4)Step Bracket	STL 10N/5N	
(5)Insertion Bridge	2-P	
	3-P	
	10-P	EB 10-12
(6)Isolator Bridge Bar, 10 P		
(7)Bridge Bar Isolator		
(8)Sw itching Bridge		
(9)Separating Plate	TS-K	
(10)Separating Plate, Width:1.5mm	ATP-PC	
(11)Test Plug Socket	PSB 4/7/6	
(12)Test Plug Socket, Insulated	PSBJ 4/15/6	
(13)Zack Strip	ZB 10	