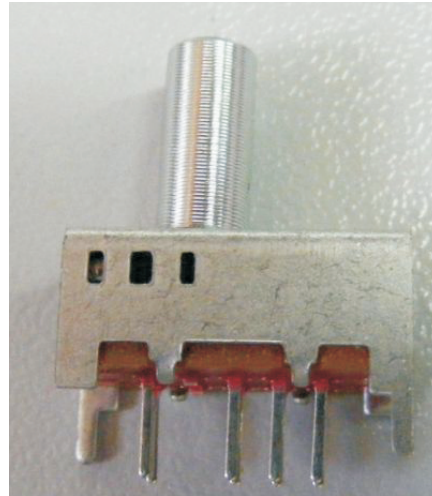


Slide Switches

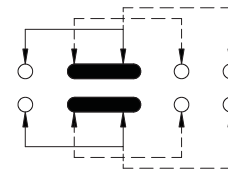
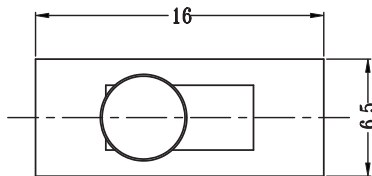
KLS7-SS-23D03-AT10 Slide Switches

Note:

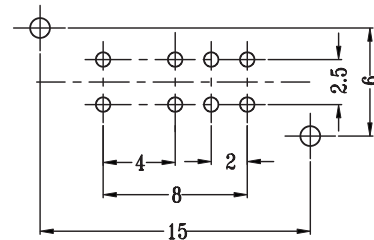
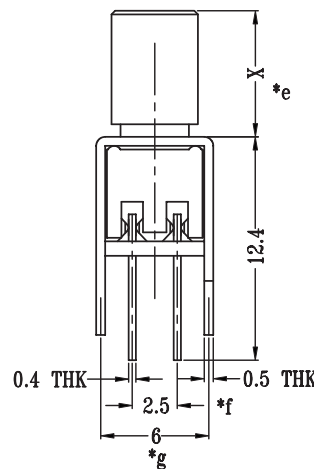
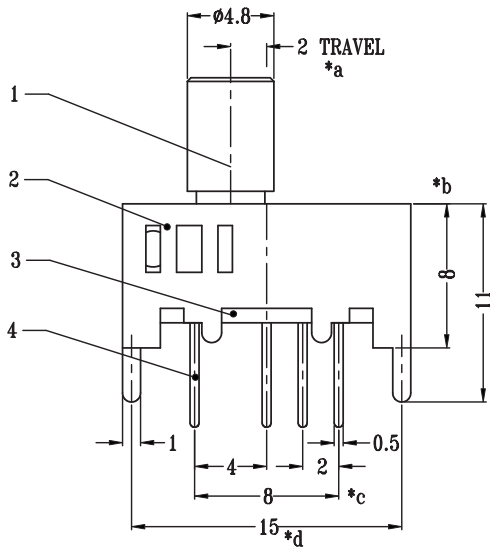
- 1、 Sleeve:Aluminium, Natural
- 2、 Frame:Steel Strip, Ni Plated
- 3、 Base:Phenolic Resin, Natural
- 4、 Terminal:Brass Strip, Ag Plated Over Ni Plated
- 5、 Contact Clip:Pbs Strip, Ag Plated
- 6、 Spring:Steel Wire, Temper
- 7、 Steel Ball:Steel, Natural
- 8、 Knob:Pom, Black



VII



SCHEMATIC (SHORTING)



P.C.B LAYOUT

ORDER INFORMATION

L-KLS7-SS-23D03-AT10

