

2.5mm Mono Jack * 2.5mm Stereo Jack

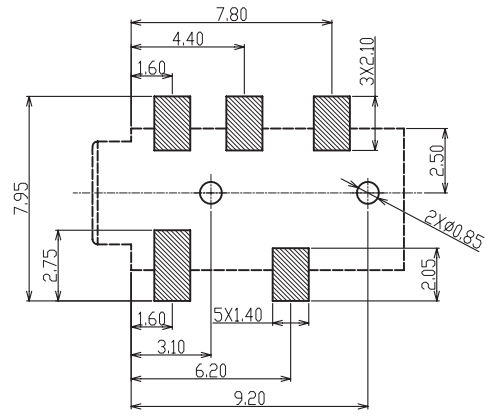
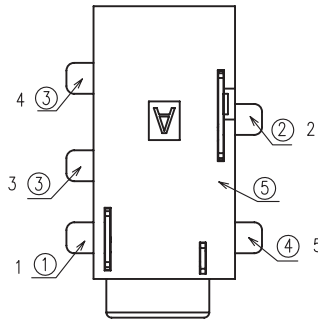
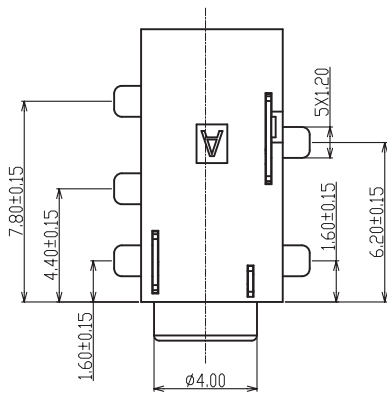
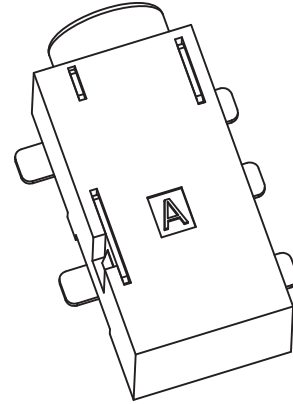
KLS1-TPJ2.5-009 (SMD Stereo Jack)

Technical parameters:

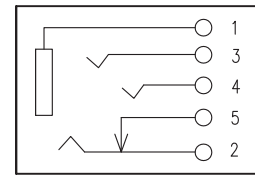
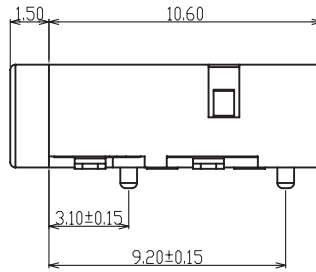
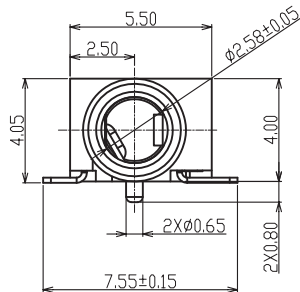
Rated voltage: DC 30 V
 Rated current: 0.5 A
 Contact resistance: 0.03Ω, max
 Insulation resistance: 100MΩ, min
 Pressure: AC500V (50Hz) / 1 minute
 Insertion Force :2-20 N
 Life: 50000 times
 Operating Temperature:-30°C ~ 70°C

Material:

Terminal 1 : Phosphor Bronze T=0.20 Au-Plated
 Terminal 2 : Phosphor Bronze T=0.20 Au-Plated
 Terminal 3 : Phosphor Bronze T=0.25 Au-Plated
 Terminal 4 : Phosphor Bronze T=0.20 Au-Plated
 Housing : PA-9T(Black)



PCB LAYOUT TOP VIEW



CIRCUIT DIAGRAM

ORDER INFORMATION

Product NO.: KLS1-TPJ2.5-009

