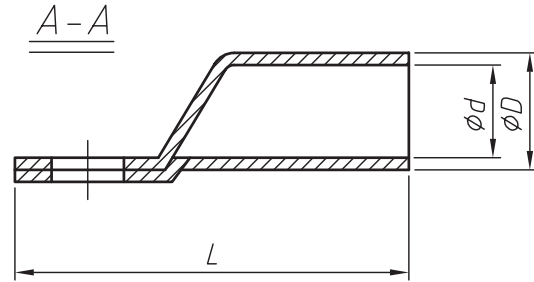
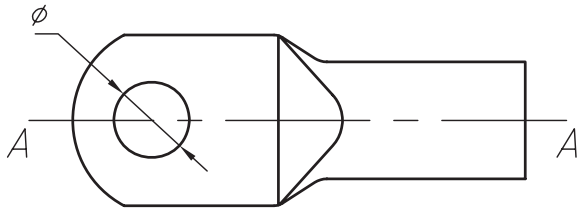


## Terminals Series

KLS8-01107B-JGA10-6 Copper connection terminal

### Specification :

Tip type : Ring tube terminal  
Hole for screw : M6  
Wire cross section : 10mm<sup>2</sup>  
Length : 21.5mm  
Contact material : copper  
Sleeve internal diameter : 4.5mm



Model & Spec	Dimension(mm)			
	φ	D	d	L
01107B-JGA10-1.5	φ 4.2, φ 5.2	3.5	1.8	18
01107B-JGA10-2.5	φ 4.2, φ 5.2, φ 6.2	4	2.5	19
01107B-JGA10-4	φ 5.2, φ 6.2	4.8	3.1	21
01107B-JGA10-6	φ 5.2, φ 6.2, φ 8.2	5.5	3.8	24
01107B-JGA10-10	φ 6.4, φ 8.2	6.8	4.8	25.5
01107B-JGA10-16	φ 6.4, φ 8.2, φ 10.5	7.5	5.5	30.5
01107B-JGA10-25	φ 6.4, φ 8.2, φ 10.5	9	7	34
01107B-JGA10-35	φ 6.4, φ 8.2, φ 10.5, φ 12.5	10.5	8.2	38
01107B-JGA10-50	φ 8.2, φ 10.5, φ 12.5	12.5	9.8	45
01107B-JGA10-70	φ 8.2, φ 10.5, φ 12.5	14.5	11.5	50
01107B-JGA10-95	φ 10.5, φ 12.5	17.5	13.8	55.5
01107B-JGA10-120	φ 12.5, φ 16.5	19.5	15.5	63
01107B-JGA10-150	φ 12.5, φ 16.5	21	16.5	71
01107B-JGA10-185	φ 16.5	23.5	18.8	78
01107B-JGA10-240	φ 16.5	26.5	21	92
01107B-JGA10-300	φ 16.5, φ 20.5	30	24	102

## ORDER INFORMATION

Product NO.: KLS8-01107B-JGA10-6

