

RCA JACK Series

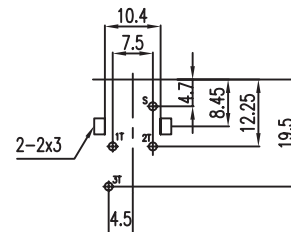
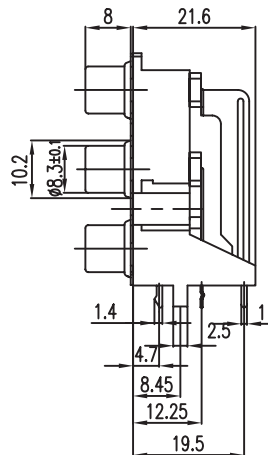
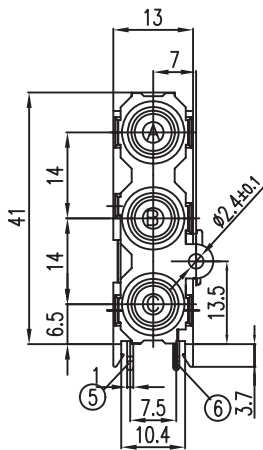
KLS1-RCA-302 R/A PCB Mount 3P RCA Jack

Electrical Specification:

Contact resistance : 30mΩ Max
 Insulation resistance : 50MΩ Min at DC 500V
 Withstand voltage : AC 500V(50Hz) 1min
 Operating Temperature : -25°C~+85°C

Materials:

Sealed Plate : Brass
 Terminal : Brass
 Outer Contact : Brass
 Washer : PBT UL94V~0
 Cover : ABS UL94V~0
 Housing : PBT UL94V~0



T:1.6 Dimensions of PC board holes
 Tolerance : ±0.1(Printed-side view)
 UNLESS OTHERWISE SPECIFIED, TOLERANCE ON DECIMAL: ±0.3

MODEL NO.	RCA-302
SCHEMATIC	

ORDER INFORMATION

Product NO.: KLS1-RCA-302-N-BL-GR-RE

Pos. NO. _____ Color: BL-GR-RE:
 RCA Jack Type _____ Blue-Green-Red
 G:Nickel Plated _____