



Stereo Jack Series

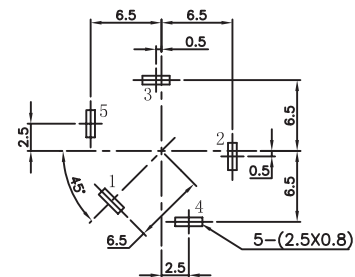
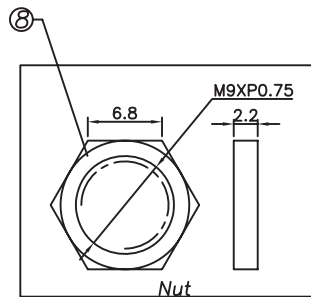
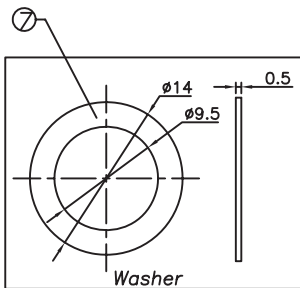
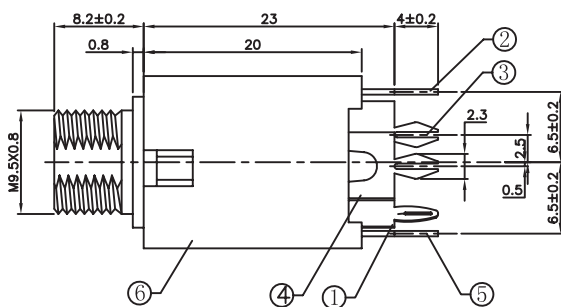
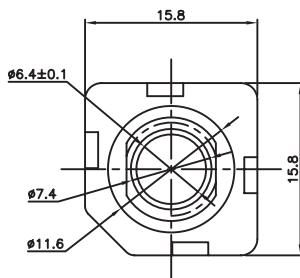
KLS1-TG6.3-004A (Stereo Jack Series)

Technical parameters:

- Rated voltage: DC 30 V
- Rated current: 0.5 A
- Contact resistance: 0.03Ω, max
- Insulation resistance: 100MΩ, min
- Pressure: AC500V (50Hz) / 1minute
- Insertion Force :2-20 N
- Life: 50000 times
- Operating Temperature:-30°C ~ 70°C

Material:

- WASHER :IRON
- HOUSING :PA66
- CURVE PIECE/ NUT : C2680
- CONTACT FOOT/ SPRING : C5191



T:1.6 Dimensions of PC board holes
Tolerance : ±0.1(Printed-top view)

SCHEMATIC					
TG6.3-004A	TG6.3-004AA	TG6.3-004AB	TG6.3-004AC	TG6.3-004AD	TG6.3-004AE

UNLESS OTHERWISE SPECIFIED, TOLERANCE ON DECIMAL: ±0.3

ORDER INFORMATION

Product NO.: KLS1-TG6.3-004AA

Pos. NO.

6.3mm Stereo Jack Series

Schematic: See Annex