

Stereo Jack Series

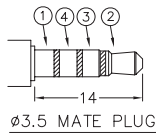
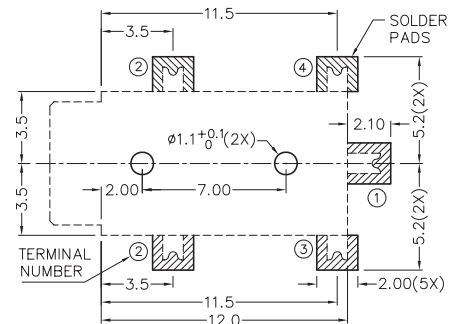
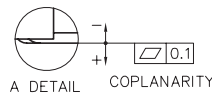
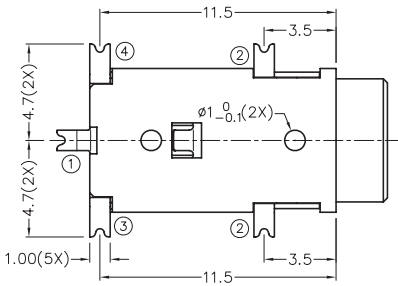
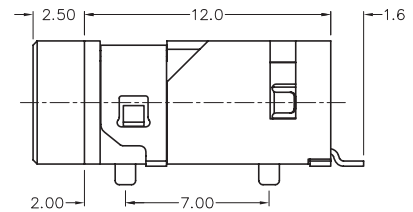
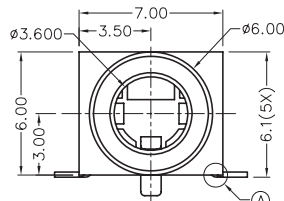
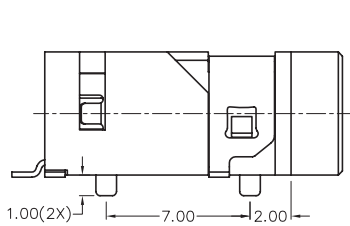
KLS1-SPJ3.5-007 (SMD Stereo Jack)

Technical parameters:

Rated voltage: DC 30 V
 Rated current: 0.5 A
 Contact resistance: 0.03Ω, max
 Insulation resistance: 100MΩ, min
 Pressure: AC500V (50Hz) / 1minute
 Insertion Force :2-20 N
 Life: 50000 times
 Operating Temperature:-30°C ~ 70°C

Material:

Terminal 1: Copper Alloy
 Terminal 2: Copper Alloy
 Terminal 3: Copper Alloy
 Terminal 4: Copper Alloy
 Housing : PA6T



MODEL NO.	SPJ3.5-007
SCHEMATIC	

ORDER INFORMATION

Product NO.: KLS1-SPJ3.5-007

