



## Stereo Jack Series

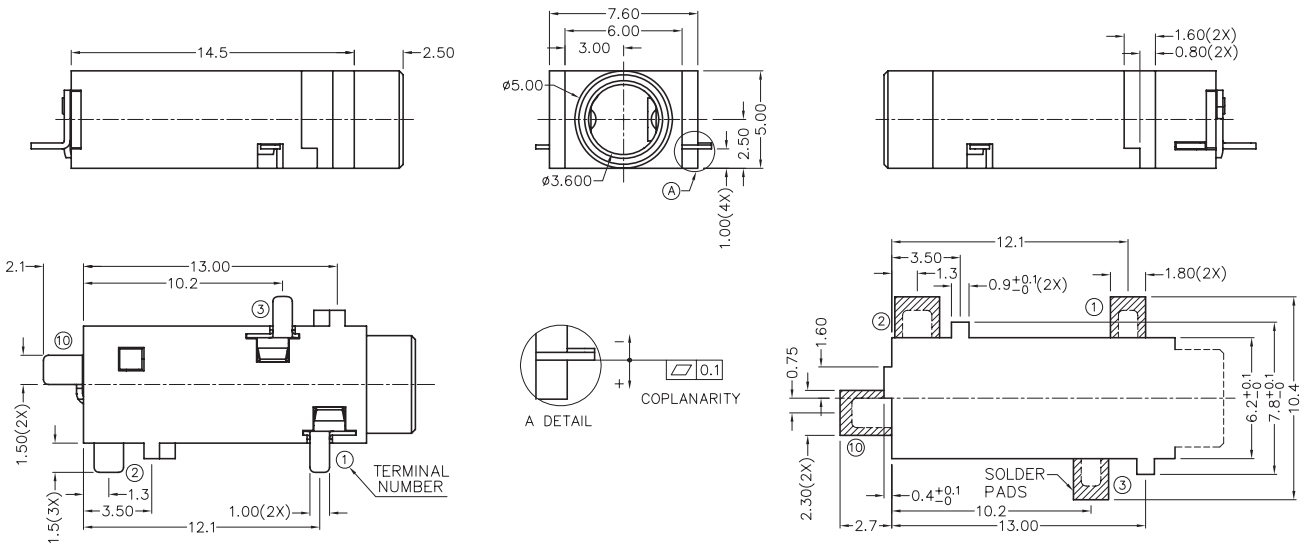
### KLS1-TPJ3.5-004 (SMD Stereo Jack)

#### Technical parameters:

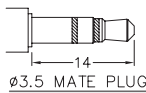
Rated voltage: DC 30 V  
 Rated current: 0.5 A  
 Contact resistance: 0.03Ω, max  
 Insulation resistance: 100MΩ, min  
 Pressure: AC500V (50Hz) / 1minute  
 Insertion Force :2-20 N  
 Life: 50000 times  
 Operating Temperature:-30°C ~ 70°C

#### Material:

Terminal 1 : Copper Alloy  
 Terminal 2 : Copper Alloy  
 Terminal 3 : Copper Alloy  
 Terminal 10 : Brass  
 Housing : PA6T  
 Cover : PA6T



RECOMMENDED SOLDER PAD LAYOUT



MODEL NO.	TPJ3.5-004	TPJ3.5-004A	TPJ3.5-004B
SCHEMATIC			

## ORDER INFORMATION

Product NO.: KLS1-TPJ3.5-004A

