

# PHONE JACK Connector

## PHONE JACK Series

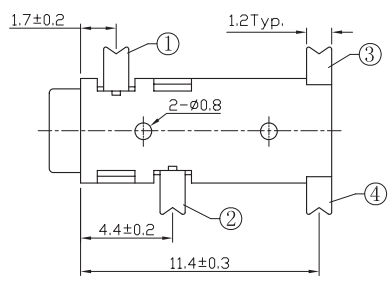
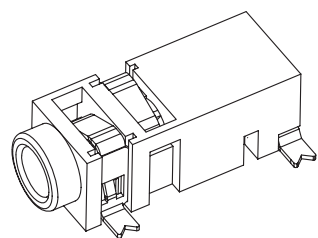
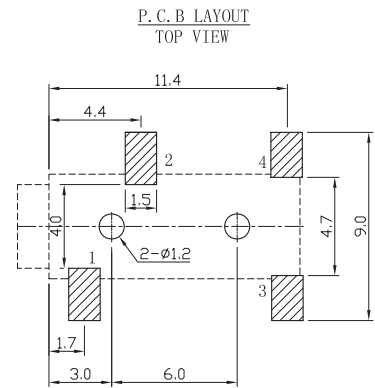
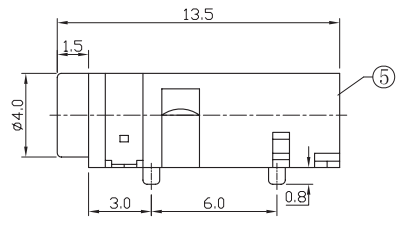
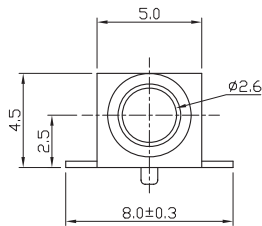
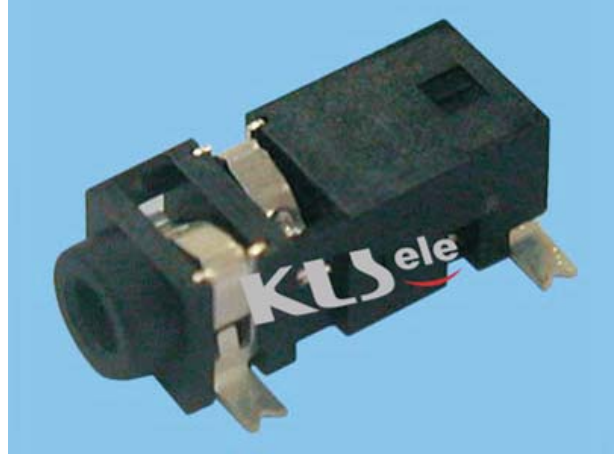
KLS1-TPJ-2.5-001A SMD 2.5 Phone Jack Type

### Electrical Specification:

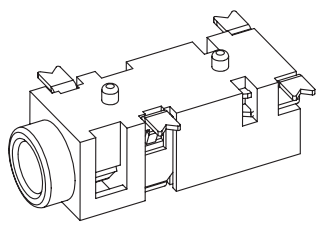
Rating: 0.5A 30V DC  
 Contact Resistance: 30mΩ max  
 Insulation Resistance: 100mΩ min at 500V DC  
 Dielectric Strength (V): AC 500V(50Hz) for 1 min  
 Life: 5000 Cycles  
 Temperature: -30°C~+70°C  
 Insertion and Extraction Force: 3-20N

### Material:

Housing : Pa46  
 Terminal 1 : Copper Alloy  
 Terminal 2 : Copper Alloy  
 Terminal 3 : Copper Alloy  
 Terminal 10 : Brass



NO.	DESCRIPTION	QTY	MATERIAL	PLATING
5	HOUSING	1	PA46	
4	CURVE PIECE	1	BRASS	Sn-Plating
3	SPRING	1	PHOSPHOR BRONZE	Sn-Plating
2	SPRING	1	PHOSPHOR BRONZE	Sn-Plating
1	SPRING	1	PHOSPHOR BRONZE	Sn-Plating



TPJ-2.5-001A	TPJ-2.5-001A-1	TPJ-2.5-001A-2

## ORDER INFORMATION

Product NO.: KLS1-TPJ-2.5 -001A - 1

Pos. NO. \_\_\_\_\_ Schmatic: See Annex  
 \_\_\_\_\_ Ø2.5 Phone Jack Type