

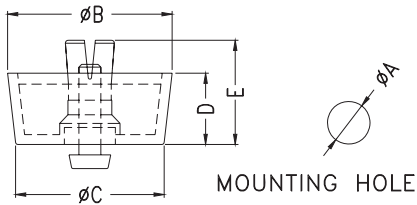
Rubber Foot Series

KLS8-0515 Rubber Foot Series



Material: PVC, PE
Color: Black
Bolts type, easy and fast to fit on case.

Unit:mm

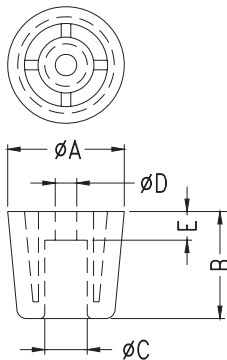


Item No.	A	B	C	D	E	Chassis Thickness	Packing
FF-1	8.0	20.8	19.8	6.4	11.8	1.0~2.5	500pcs
FF-2	8.0	20.0	18.0	10.0	15.4	1.0~2.5	500pcs
FF-3	8.0	23.7	19.5	13.7	19.2	1.0~2.5	300pcs
FF-4	8.0	25.0	23.5	6.5	12.5	1.0~2.5	500pcs
FF-5	8.0	30.0	27.7	12.8	18.8	1.0~2.5	200pcs
FF-6	10.0	28.5	26.5	8.2	14.0	1.0~3.5	250pcs
FF-7	5.0	12.7	12.0	4.4	8.5	1.0~2.0	1000pcs
FF-9	8.0	20.0	18.6	4.0	7.0	1.0~2.0	500pcs
FF-10	8.0	23.8	22.0	5.0	10.0	1.0~2.5	500pcs
FF-11	10.0	31.5	28.5	7.8	13.6	1.0~3.5	250pcs
FF-12	8.0	20.0	18.0	15.0	20.8	1.0~3.0	500pcs
FF-13	7.9	20.0	18.0	18.0	23.8	0.8~1.0	500pcs
FF-14	8.0	19.5	18.7	5.0	10.5	0.8~2.0	500pcs

KLS8-0516 Rubber Foot Series



Material: ABS And PP and Rubber
Color: Black
Unit:mm



Item No.	A	B	C	D	E	Packing
FFT-1	15.0	8.0	7.5	3.7	3.5	1000pcs
FFT-2	20.0	12.1	8.2	4.1	5.5	500pcs
FFT-3	25.0	16.2	10.4	4.3	8.1	1000pcs
FFT-4	24.4	22.4	8.9	4.6	6.0	1000pcs
FFT-5	26.0	12.7	10.9	5.1	5.7	1000pcs
FFT-6	22.5	22.4	8.6	4.6	6.0	1000pcs