

# SIM Card Connector

## SIM card Connector Series

### KLS1-TF-002 T-FLASH Mirco SD Connector Series

#### Material

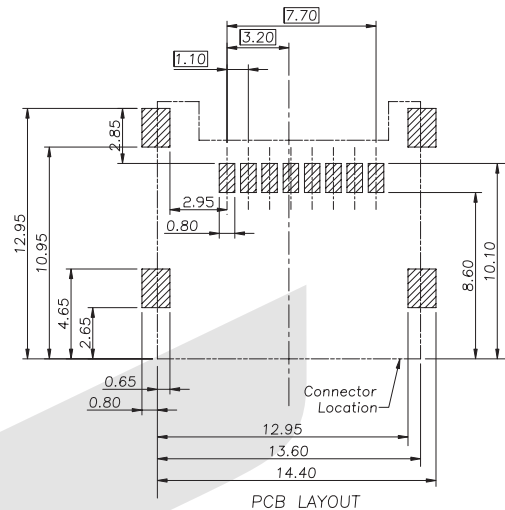
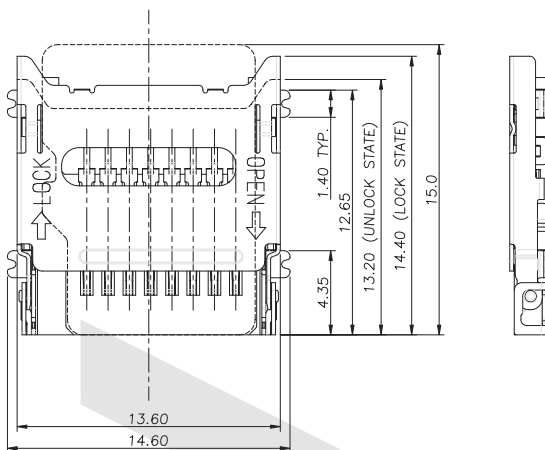
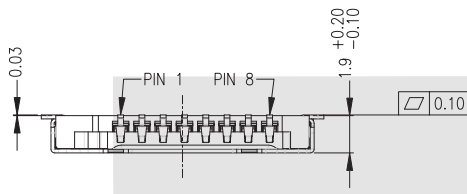
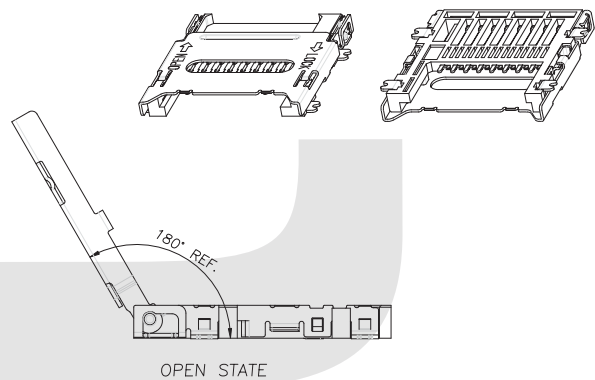
Housing: LCP UL94V-0  
 Card button: LCP UL94V-0  
 Reed tab: Tin-bronze QSn6.5-0.1 GB2066-89  
 PACKAGE: Tape and Reel Package

#### Specification

Pitch: 2.54mm  
 Environmental temperature: -45°C~+85°C  
 Voltage rating: 100V AC  
 Current rating: 0.5A Max  
 Withstand voltage: 200V AC/1Minute  
 Insulation resistance:  $\geq 1000M\Omega$   
 Contact resistance:  $\leq 30m\Omega$   
 Life: >5000 Cycles



PIN NO.	NAME	TYPE <sup>1</sup>	DESCRIPTION
1	DAT2	I/O/PP	Data Line [bit2]
2	CD/DAT3	I/O/PP	Card Detect Data Line [bit3]
3	CMD	PP	Command Response
4	VDD	S	Supply Voltage
5	CLK	I	Clock
6	VSS	S	Supply Voltage Ground
7	DAT0	I/O/PP	Data Line [bit0]
8	DAT1 <sup>2</sup>	I/O/PP	Data Line [bit1]



## ORDER INFORMATION

Product NO.: KLS1-TF- 002

Pos. NO. \_\_\_\_\_  
 T-FLASH Mirco SD Connector Type \_\_\_\_\_

